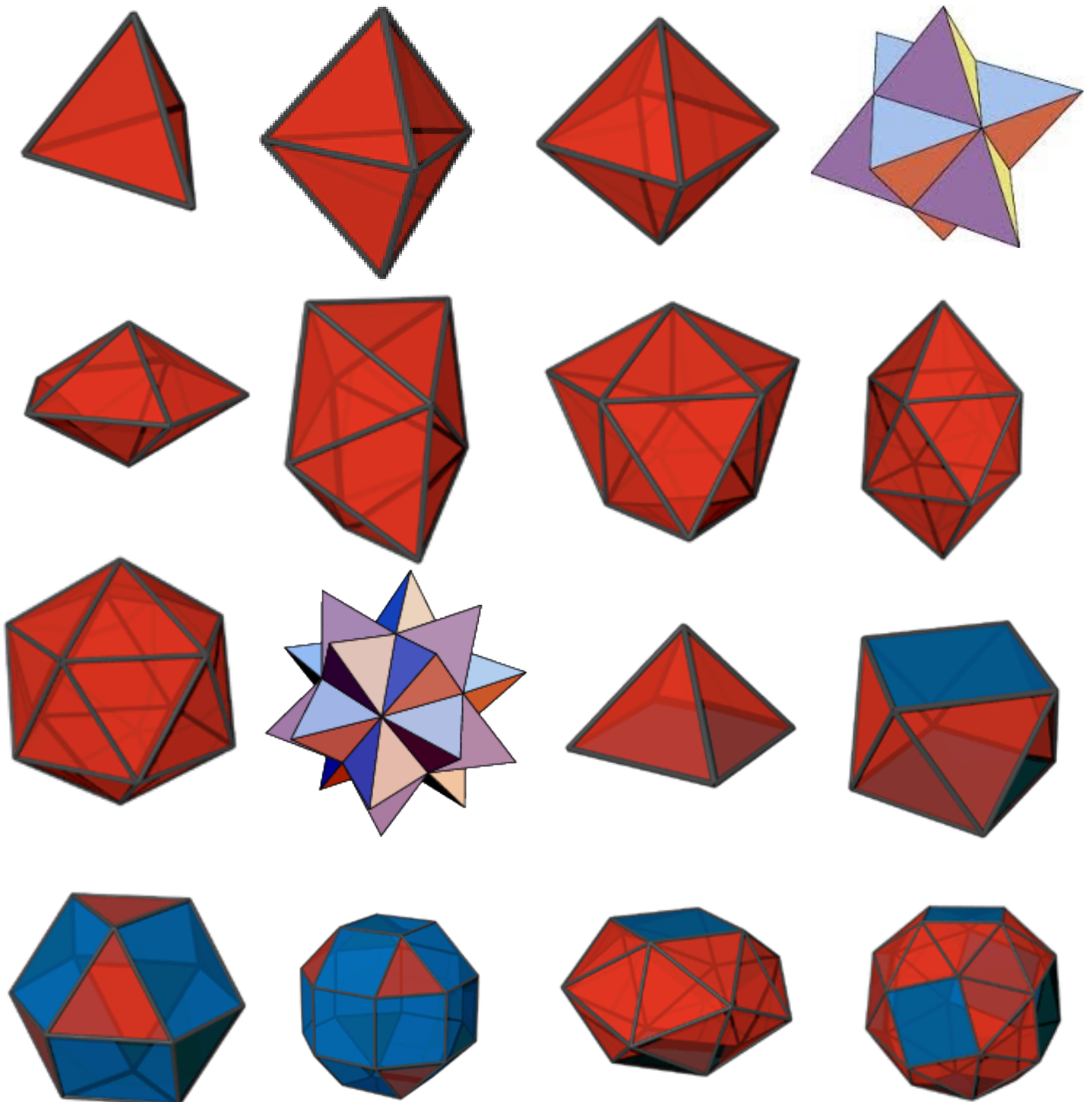


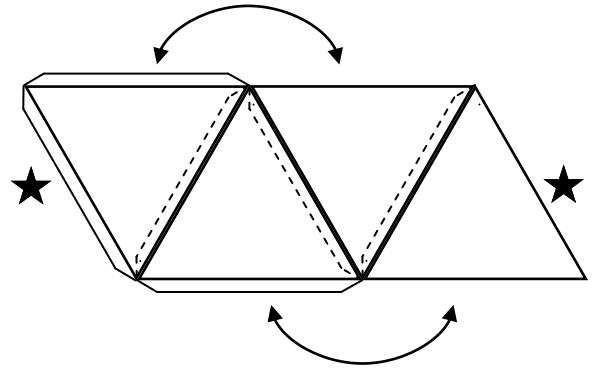
LICHTWEEK STATENKWARTIER 11-20 NOVEMBER 2015

LAMPION VARIANTEN



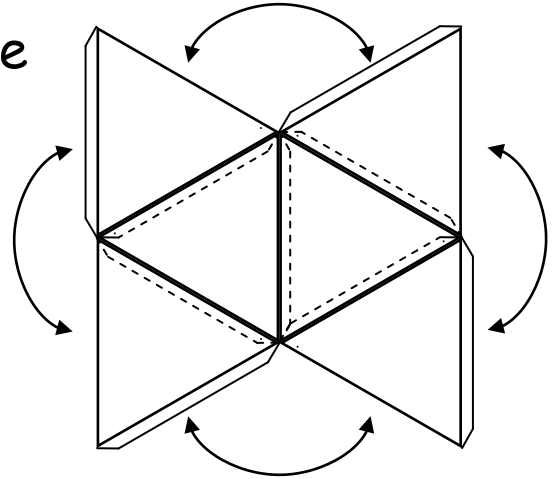
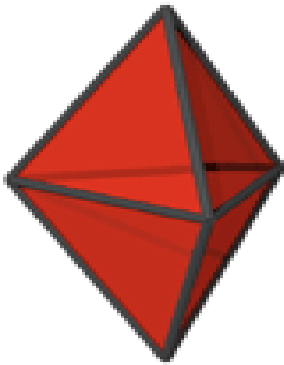
Tetraëder

4 vlakken = driehoeken



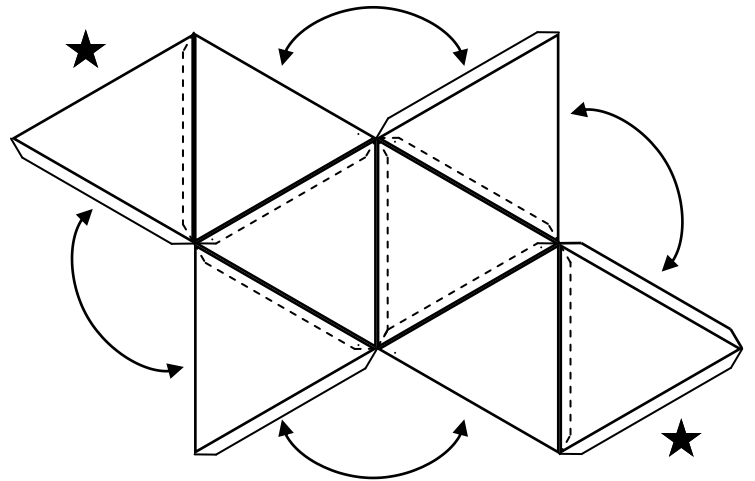
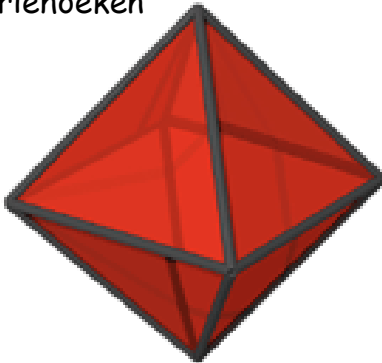
Regelmatige driehoekige dipiramide

6 vlakken = driehoeken



Octaëder

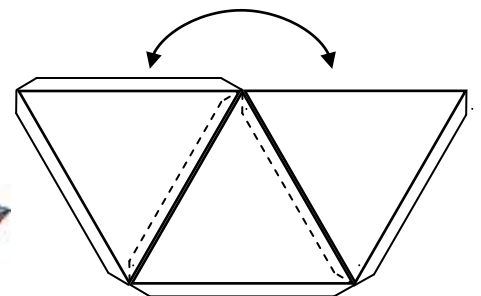
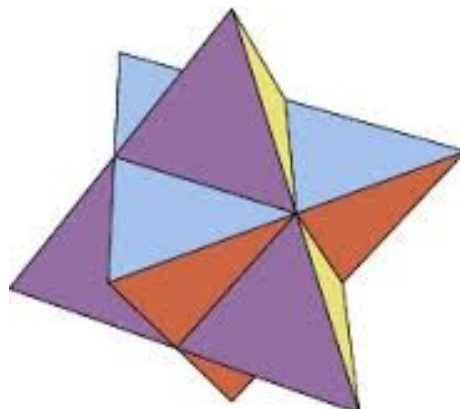
8 vlakken = driehoeken



Stella octangula / Achtpuntige Moravische ster

24 vlakken = driehoeken

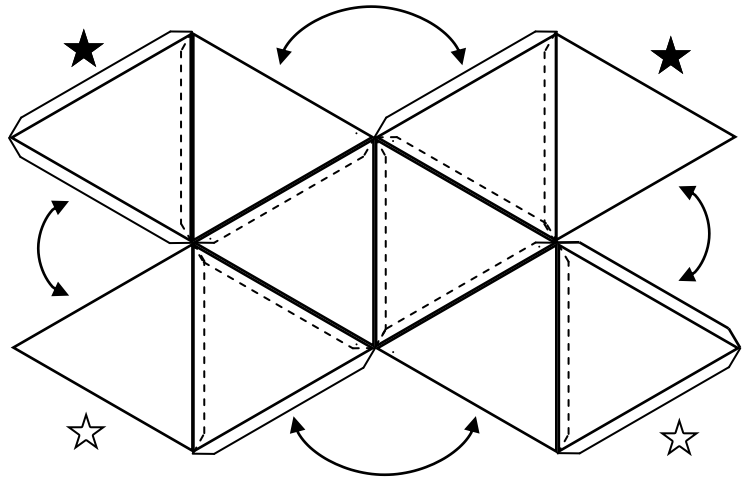
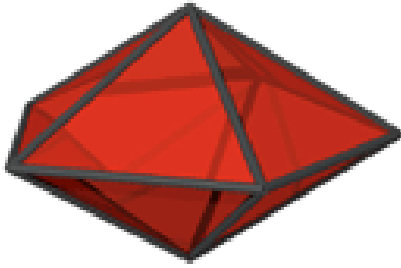
Plak op elk vlak van bovenstaande octaëder een driehoekige piramide, hiernaast.



Driehoekige piramide 8x

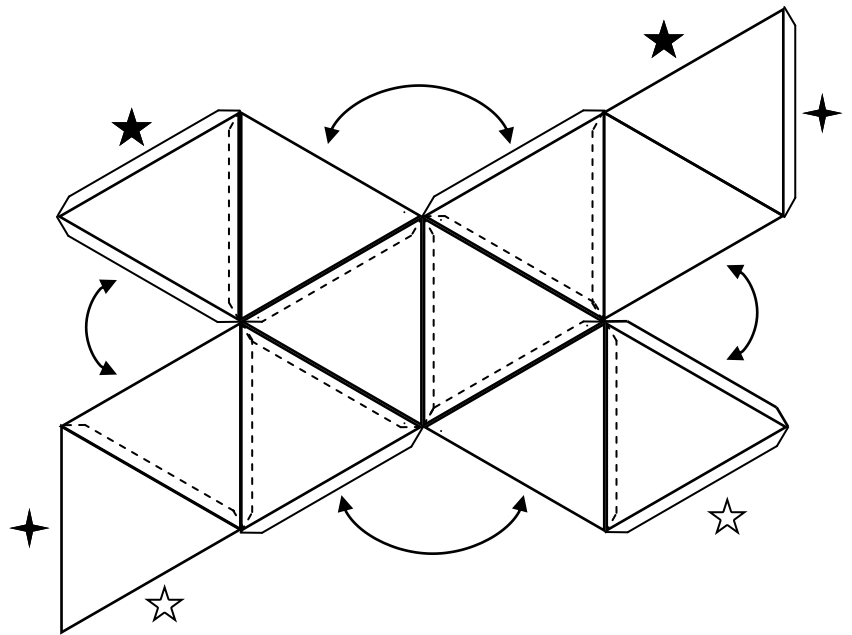
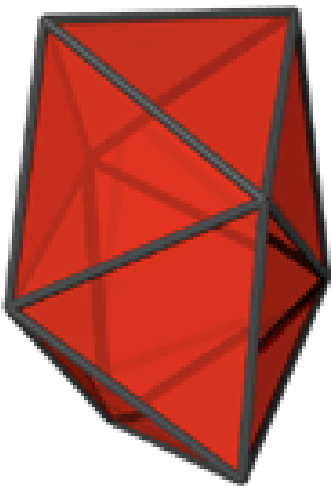
Regelmatige vijfhoekige dipiramide

10 vlakken = driehoeken



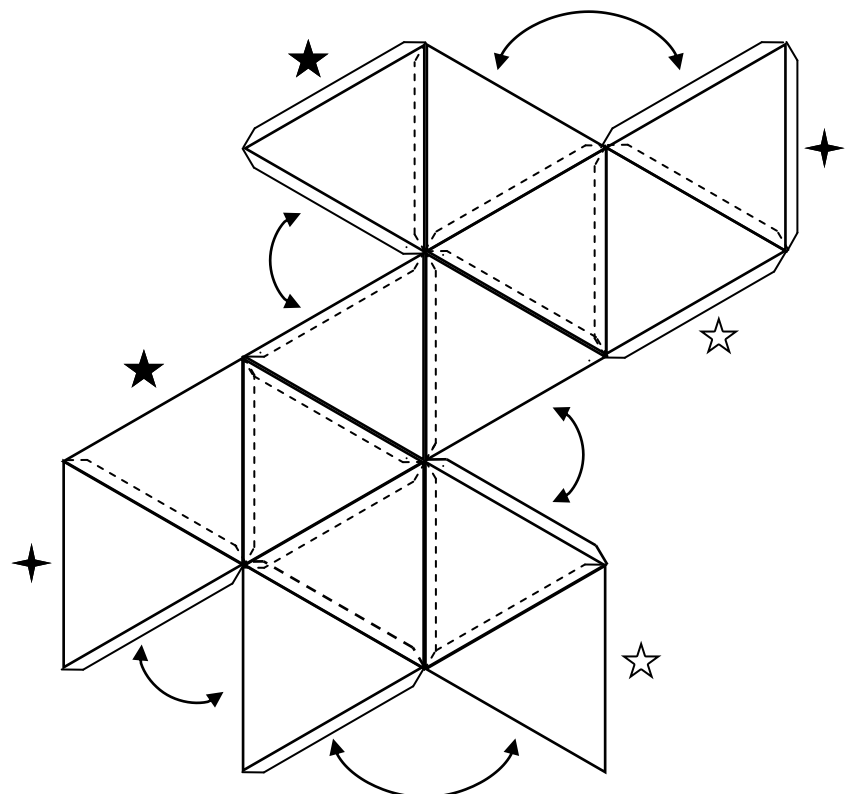
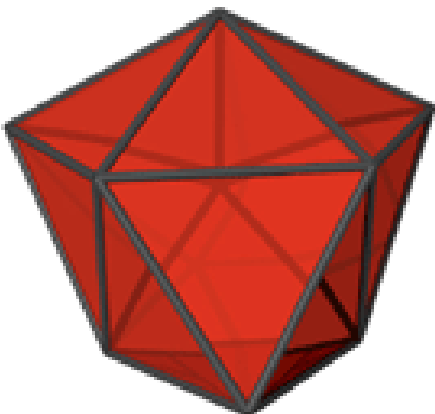
Delta 12-vlak

12 vlakken = driehoeken



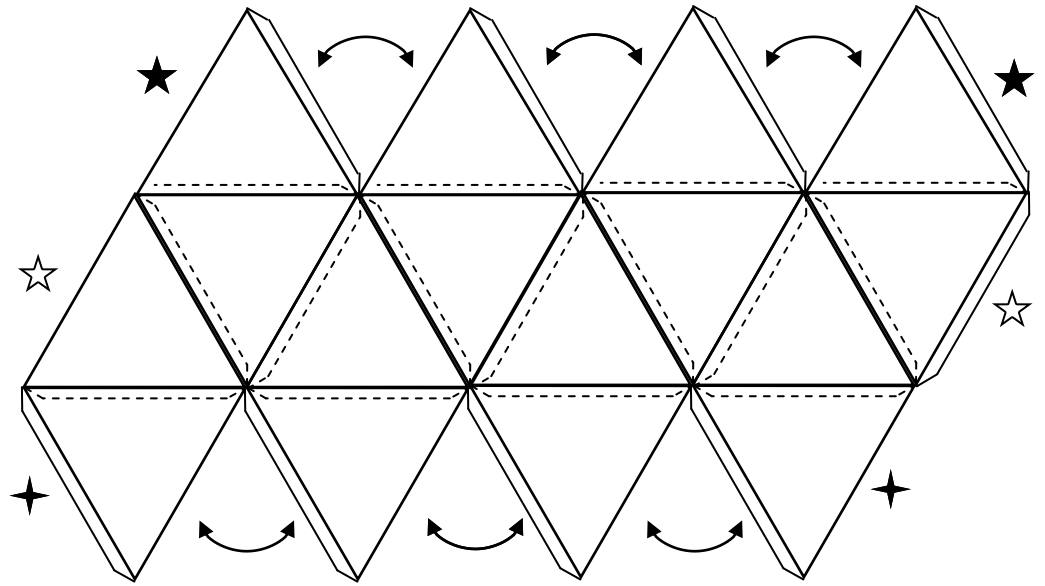
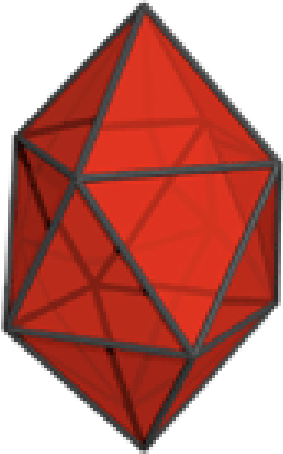
Delta 14-vlak

14 vlakken = driehoeken



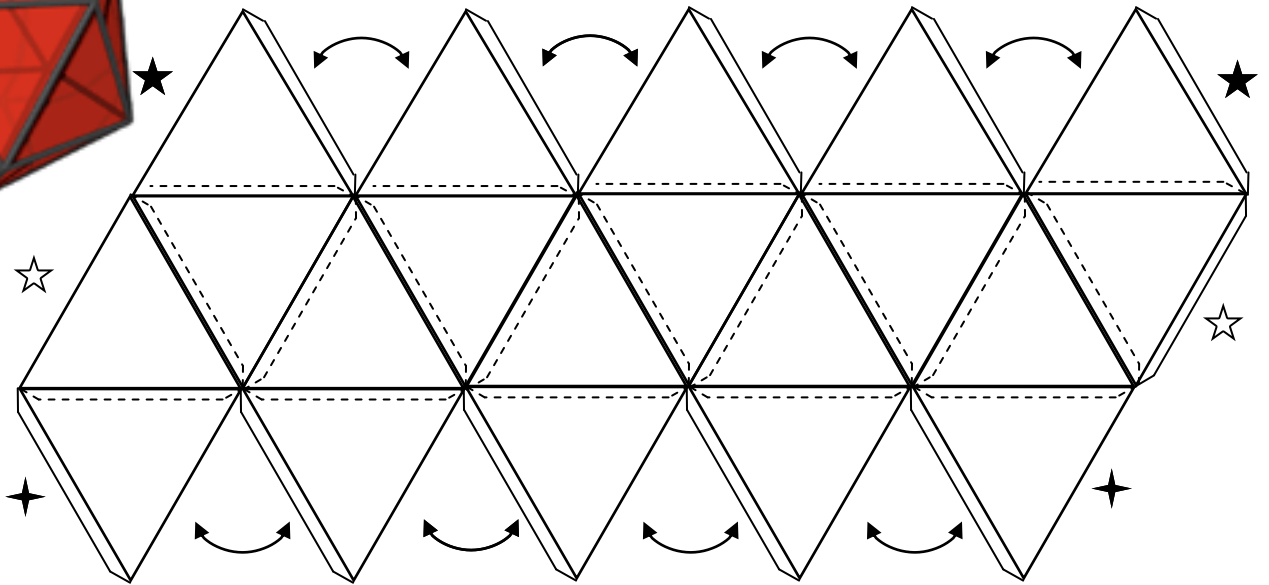
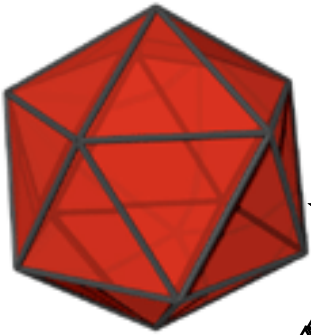
Delta 16-vlak

16 vlakken = driehoeken



Icosaëder

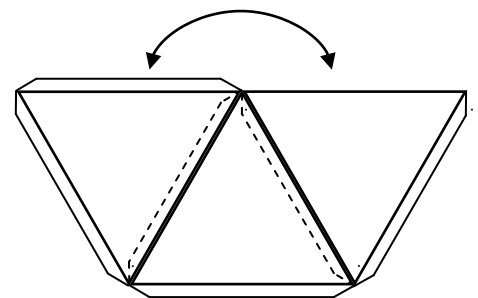
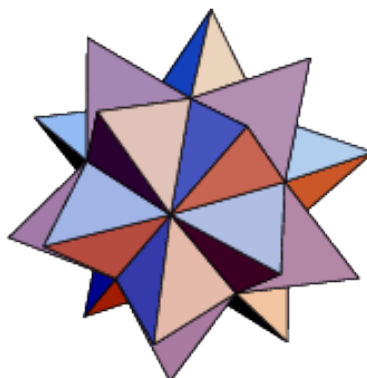
20 vlakken = driehoeken



Twintigpuntige Moravische ster

60 vlakken = driehoeken

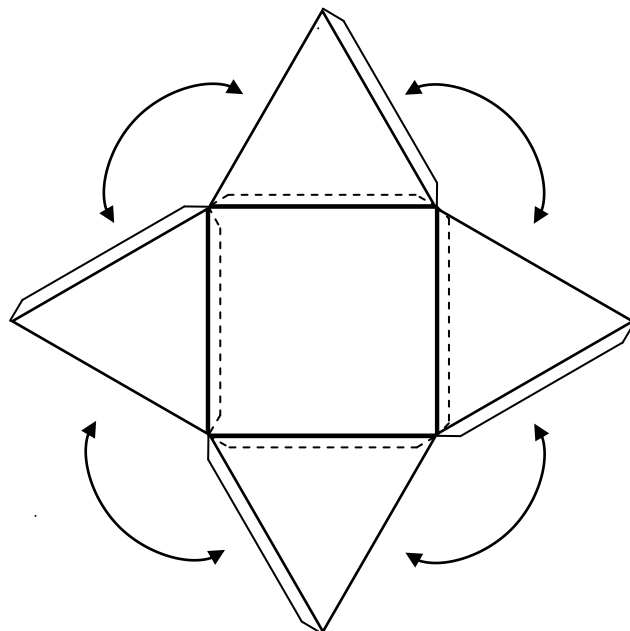
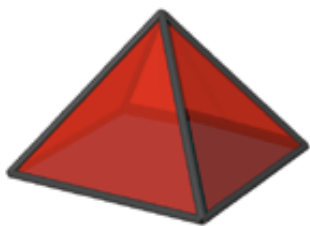
Plak op elk vlak van bovenstaande icosaaëder een driehoekige piramide, hiernaast.



Driehoekige piramide 20x

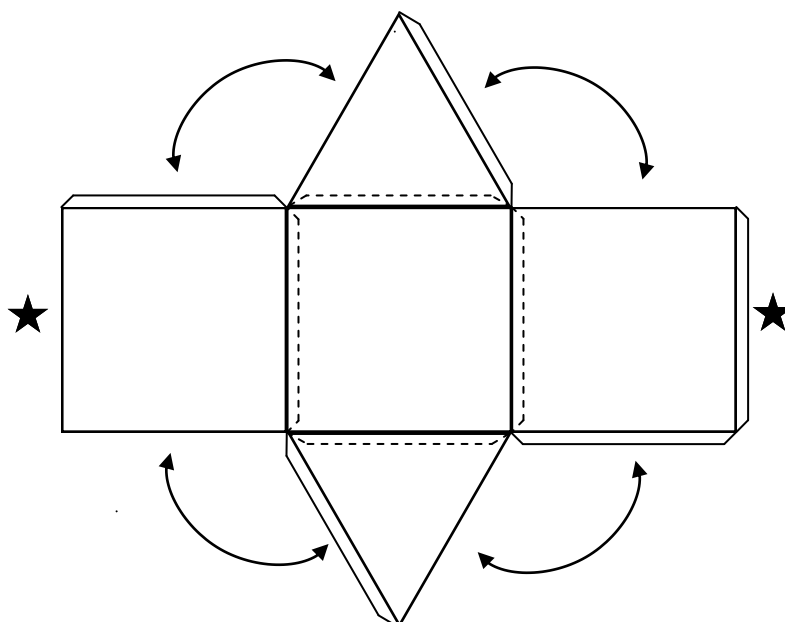
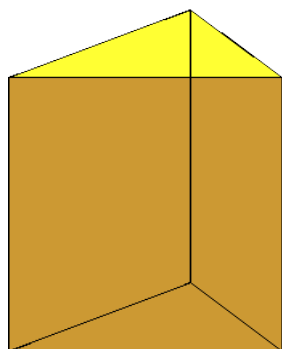
Vierkante piramide

5 vlakken =
1 vierkant
4 driehoeken



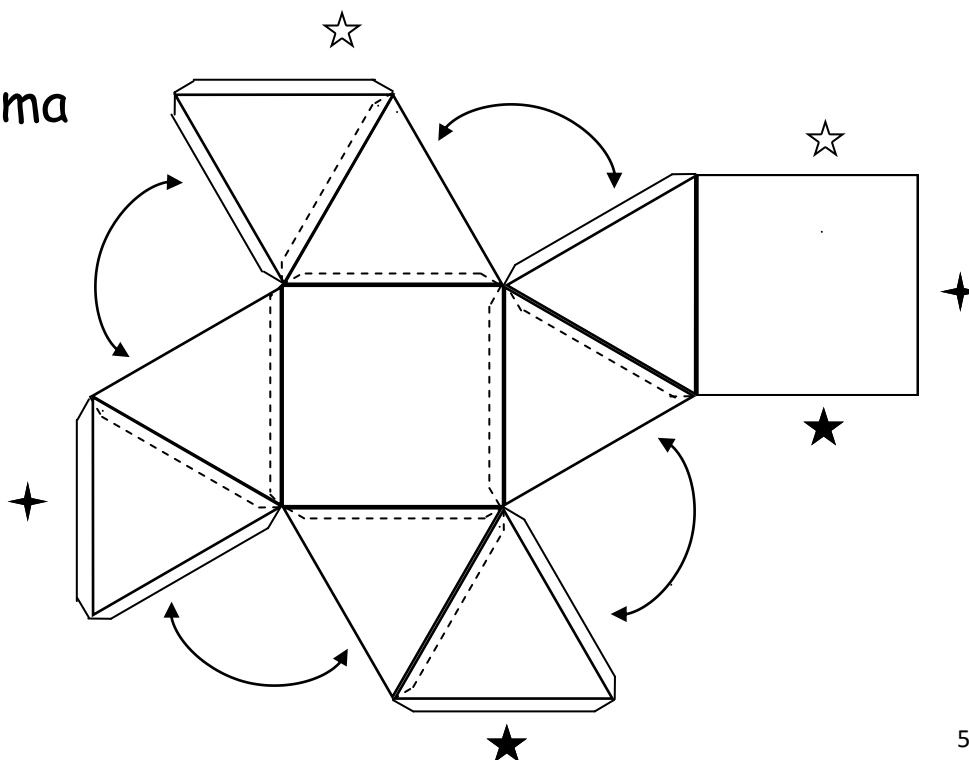
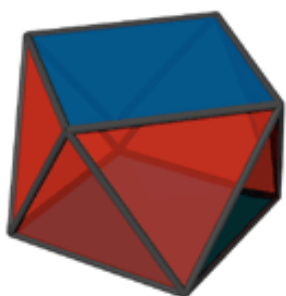
Driehoekig prisma

5 vlakken =
3 vierkanten
2 driehoeken



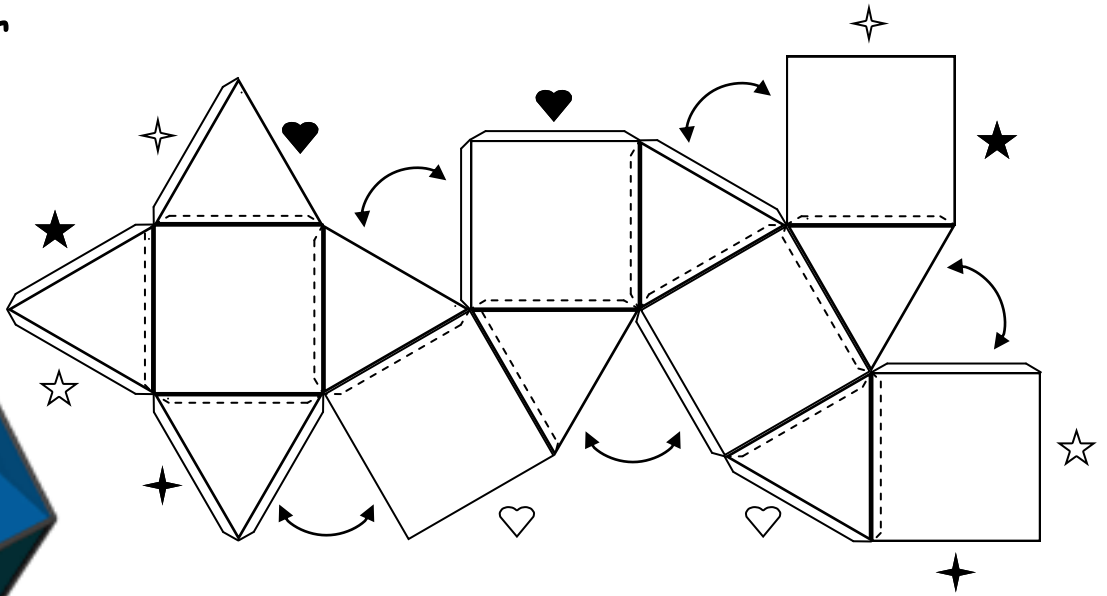
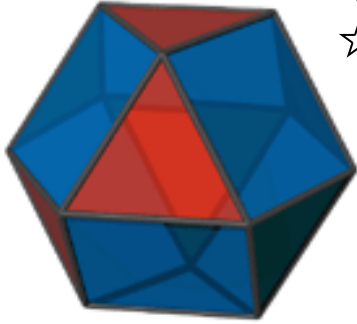
Vierkant antiprisma

10 vlakken =
2 vierkanten
8 driehoeken



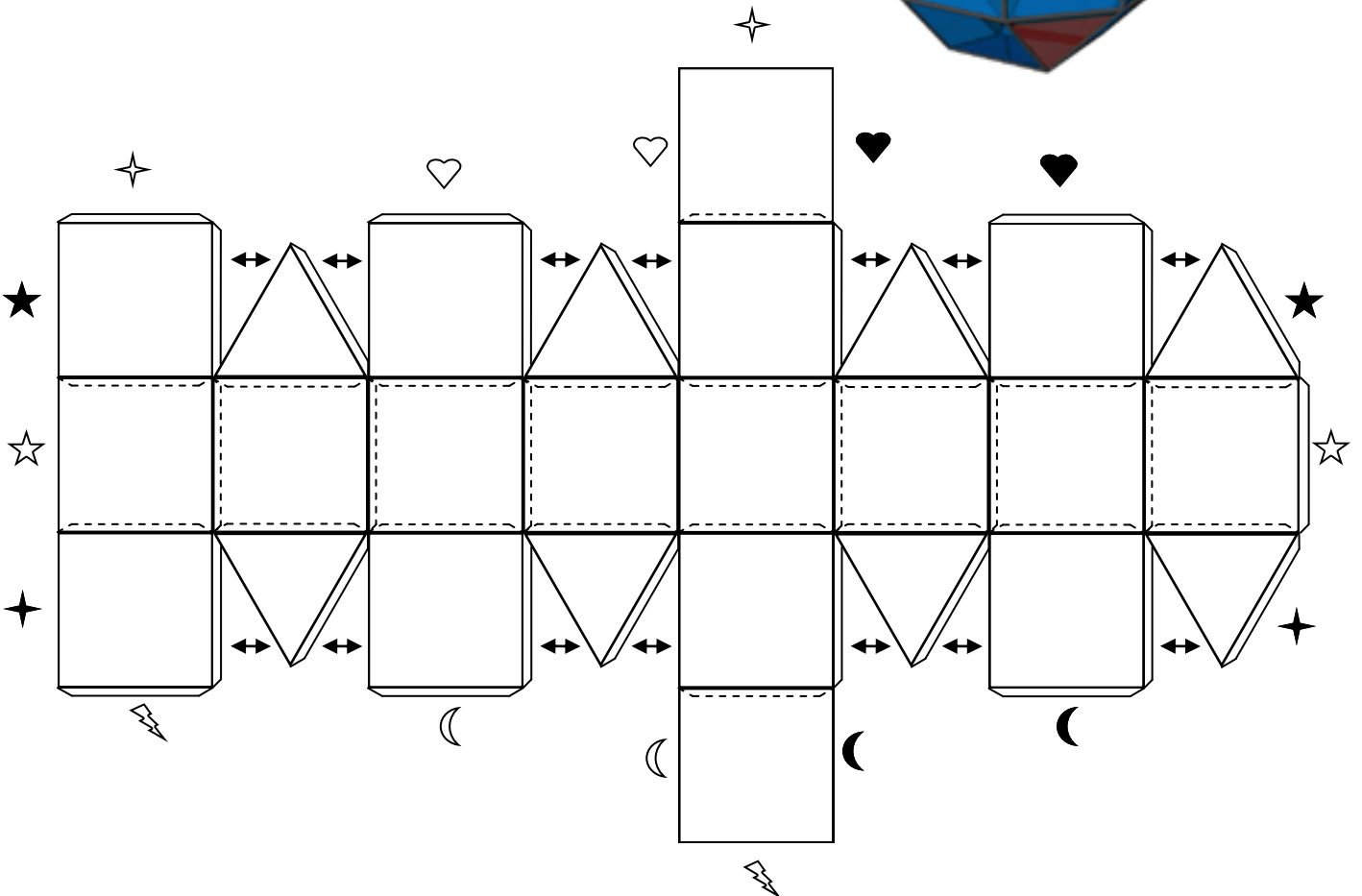
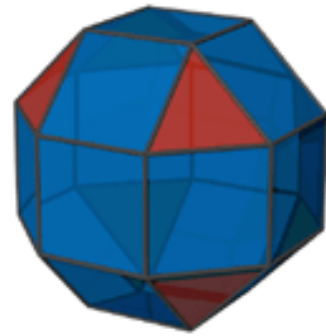
Kuboctaëder

14 vlakken =
6 vierkanten
8 driehoeken



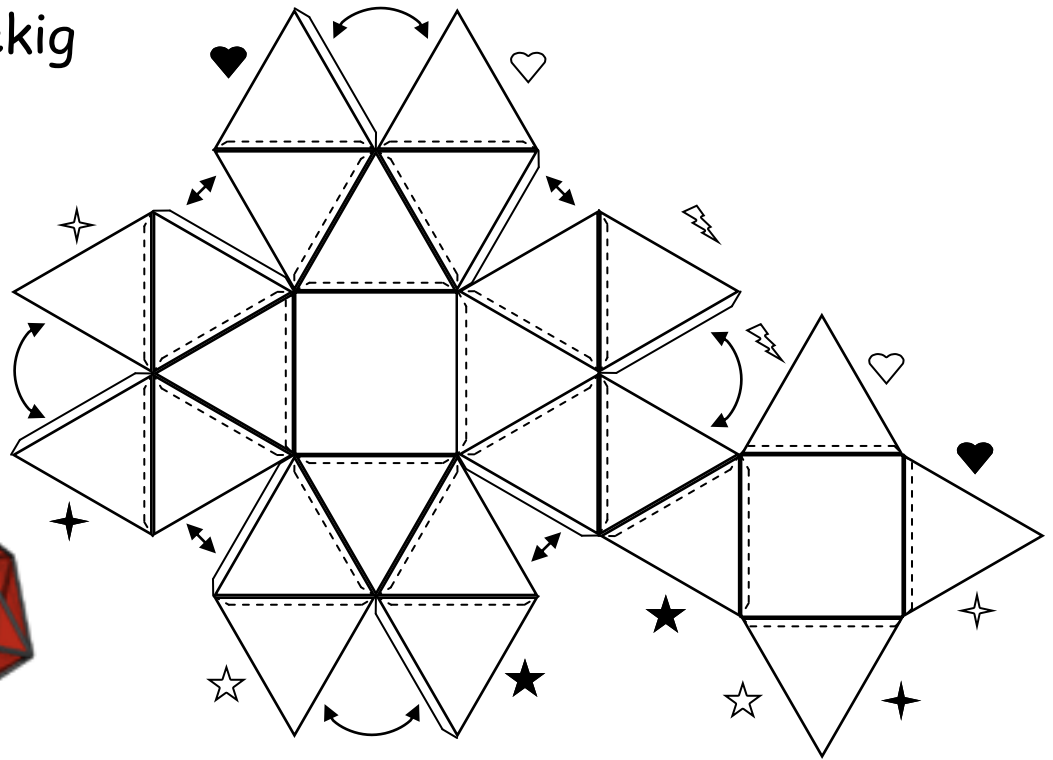
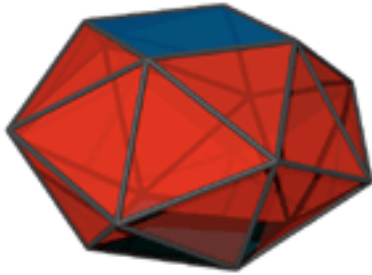
Rhombikuboctaëder

26 vlakken =
18 vierkanten
8 driehoeken



Stomp vierhoekig antiprisma

26 vlakken =
2 vierkanten
24 driehoeken



Stompe kubus

36 vlakken =
6 vierkanten
30 driehoeken

